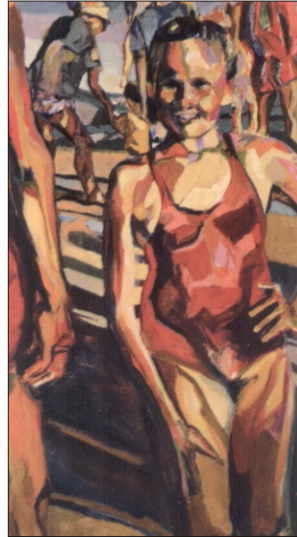



Tomasello Winery

CAPE MAY WHITE



Tomasello



CAPE MAY WHITE
PROPRIETOR'S RESERVE
ATLANTIC COUNTY, NEW JERSEY
TABLE WINE
GROWN, PRODUCED AND BOTTLED BY TOMASELLO WINERY
HAMMONTON, NJ 08037
CONTAINS SULFITES

Made from a blend of grapes with the predominate one being the French hybrid Villard Blanc. The wine has a grassy nose and the taste is crisp and balanced. Great for sipping alone or with light hors' d oeuvres.

Wines Of Character.

www.tomasellowinery.com